

شركة فيجن الدولية  
للتجارة العامة و المقاولات

Vision Bring Meaning To Maps



General Trading & Contracting Company



2024  
2025



Our services are delivered to the highest level of quality, guaranteeing satisfaction to our clients and fostering their confidence in our abilities.



تليفون: +965 222-89-778

فاكس: +965 222-89-779

info@visionkuwait.com

# CONTENTS

	subject	Page
1 :	<b>ABOUT OUR COMPANY</b> .....	<b>1</b>
2 :	<b>STRATEGIC PARTNERS</b> .....	<b>2</b>
3 :	<b>PROVIDE SERVICES &amp; PLATFORMS</b> ..	<b>3</b>
4 :	<b>COMPANY ACTIVITIES</b> .....	<b>4</b>
5 :	<b>MAJOR CLIENTS</b> .....	<b>8</b>
6 :	<b>SAMPLE PROJECTS</b> .....	<b>9</b>
7 :	<b>MAJOR PROJECTS</b> .....	<b>14</b>

VisionProfile.pdf



**Vision Bring Meaning To Maps**

# ABOUT OUR COMPANY



Vision International is a Kuwaiti company established in 2004, specializing in the fields of Geo-informatics, including mapping and cartography, a number of aspects of survey, including Topographic, GPS, subsurface utilities, and Bathymetric, aerial and terrestrial photogrammetry, remote sensing and GIS solutions.

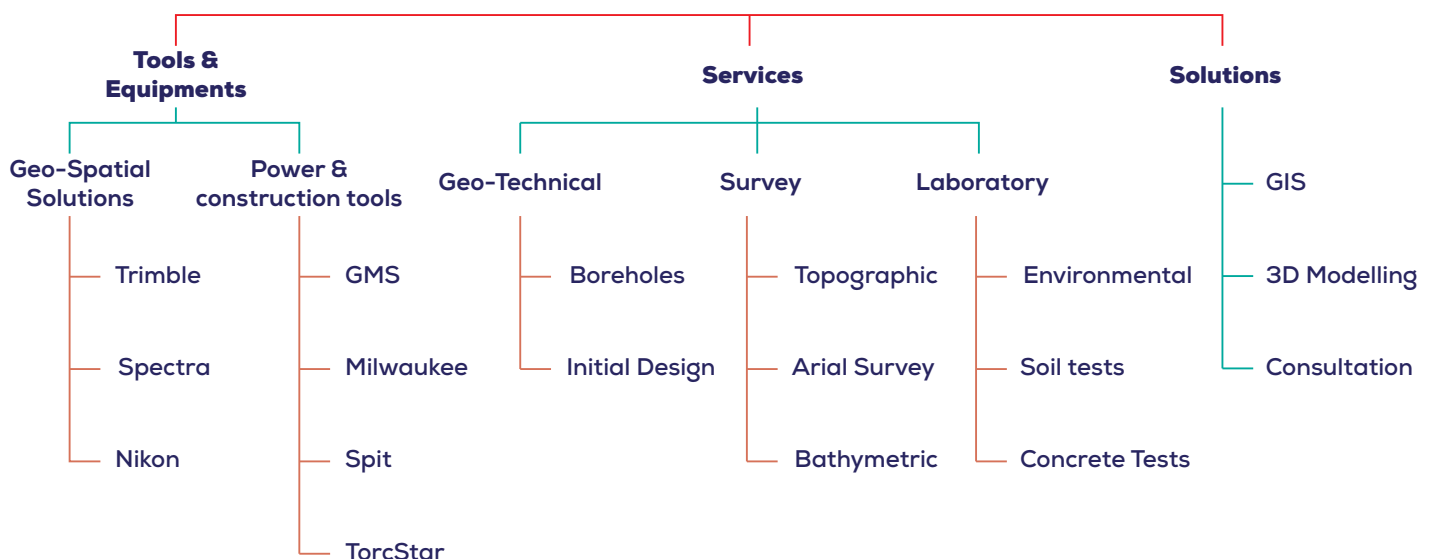
Vision incorporates engineering with IT to deliver enterprise engineering solutions using the skills and knowledge of our engineering and IT specialists. We work in the fields of GIS, BIM, Document Management Solutions (DMS) and enterprise integral solutions in parallel with our existing engineering activities in surveying and geotechnical engineering. The Company is registered with the Kuwait Central Authority for Information Technology (CAIT).

In recent years, the survey capabilities of the firm were extended to include 3D laser scanners, vehicle mounted panoramic scanners, underground detectors, bathymetric survey equipment, and Unmanned Aerial Vehicles for the acquisition of aerial imagery.

During the course of the past years, Vision International has expanded, establishing its own in-house Geotechnical Investigation and Laboratory Testing resources and capabilities.

Locally, the clients of Vision International are drawn from the Oil and Gas sector, the Ministry of Electricity and Water, the Ministry of Public Works, the Kuwait Municipality, Homeland Security, the Military and the Construction sector. The company and its partners have also participated in a number of GIS/survey projects in the Gulf Region.

## Vision International Services



# STRATEGIC PARTNERS

The forming of strategic partnerships gives us a competitive advantage and an opportunity to access a broader range of resources and expertise. The partnership will offer our clients distinctive skill sets and product lines that set us apart from the competition.



# SERVICES & PLATFORMS SUPPORTED





# COMPANY ACTIVITIES

## 01. GEOINFORMATICS SERVICES

The Geoinformatics Services Division was established with the specific objective of confirming Vision International as a leading solutions provider and re-engineering expert. We offer high quality and timely solutions in a cost effective manner

Our services are delivered to the highest level of quality, guaranteeing satisfaction to our clients and fostering their confidence in our abilities.



We are considered one of the more experienced GIS solutions providers in the market. This reputation is based on the experience of our team and through their expertise we have come to dominate some of the critical sectors in this market and to cope with the highly growing GIS culture in Kuwait and regional Market.

## 01 CONSULTING

At Vision, we are committed to providing you the GIS solutions to deliver the optimum business value. Our Geoinformatics consultants provide a complete array of consulting services, including assessment of your geographical and geo-spatial data requirements, information gathering procedures and evaluation of your GIS infrastructure. Our consultants are also able to perform geospatial workflow analysis, design and optimize geospatial workflows as per your requirements. We help our clients build their GIS roadmap,



## 02 MANAGED SERVICES

Our managed service offering has been designed to manage and maintain your GIS applications and data in around-the-clock fashion. We managed service team follows the proven processes and ensure maintenance of their SLA's with our clients. They provide (24x7) helpdesk and support services and are able to resolve your issues within acceptable timeframes to the desired levels of satisfaction. Our managed services team takes care of your GIS data updates, GIS work order posting and data conversion and also, perform quality testing of your GIS applications.

## 03 APPLICATION DEVELOPMENT

Vision employs a team of expert GIS application developers who selectively combine the best-fit technologies to build GIS applications, maintain existing ones, and integrate them with business systems. We are able to develop specific data models for your GIS applications. In addition, we have completed several Web-based and mobile-based GIS applications, which illustrates our capabilities in the field of GIS application development.



# COMPANY ACTIVITIES

## 04 TRAINING

Through our certified instructors Vision International considered one of the well known training provider for Geospatial courses. this include all Trimble Geospatial services. We offer ArcGIS, AutoCAD, Geo-spatial and Survey training courses at Foundation and Intermediate levels, plus bespoke workshops and mentoring and a «travelling» option through our Esri Certified Trainers.

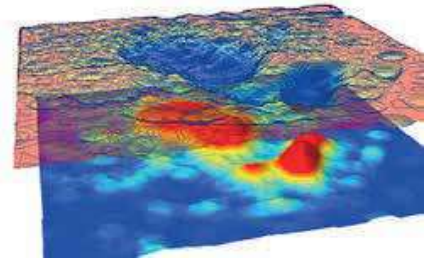


### Courses:

- 1- GIS Foundation (Introduction to ArcGIS for beginner, Master ArcGIS)
- 2- GIS Advanced (Spatial Analysis)
- 3- Cartography and Map Development (Develop Maps using ArcGIS)
- 4- Geo-data Management (Geodatabase management, SDE management)
- 5- ArcGIS for server (Sharing, Administration, Publishing)

## 05 SPATIAL DATA SERVICES

We are able to convert and digitalize your printed data, drawings, satellite imagery and photographs so that your GIS applications may make use of them. We have extensive experience in remote sensing, i.e. in satellite image sensing and interpretation. One of our key offering is image processing that ensure that high-resolution images are rasterized maintaining the highest possible quality.



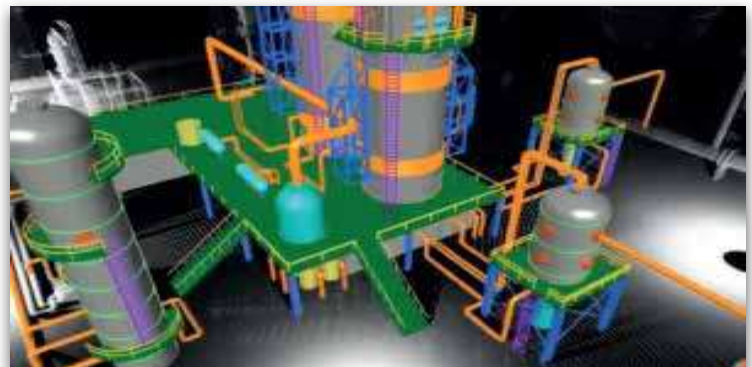
## 07 LAND MANAGEMENT

Land management experts at Vision International understand the spatial extent and usage of land information so that we can help organize the land records data for an effective planning. Land records data management is often a daunting task, which can be eased up with our land management engagement. We also help our clients with land valuation, land parcels' mapping, and integrating land records to allow assessment of infrastructure for suitability of specific purposes and better management of land resources. We also help our clients in their smart governance and e-governance enablement initiatives at various stages. Including the analysis of current governance practices, reviews, recommendations, planning, project execution and staff training, we are able to help at any/all stages whilst giving you the benefit of our strong technological foundation along the course.



## 06 3D MODELLING

We offer a comprehensive 3D modelling service. Our technical expertise results in highly accurate 3D models, from small objects to large buildings and structures, we have a wealth of experience to provide you with detailed and life-like models. In addition our 3D laser scanning service is a highly accurate method of capturing point cloud data, which we use to. To date we have undertaken a wide range of 3D projects including scanning and modelling buildings, streets and industrial plants. create the models.





# COMPANY ACTIVITIES

## 02. SURVEY SERVICES



### MAPPING THE WORLD



#### 01 TOPOGRAPHIC SURVEY AND MAPPING

Using the latest of technology including; reflector less theodolites, robotic instruments, survey quality GPS and one-man total stations we provide our clients and their consultants with accurate and economical survey solutions for all aspects of land surveying.

#### 02 UNDERGROUND UTILITIES DETECTION

The Company possesses specialist expertise in the detection of underground services, using both Electromagnetic Detection ( E MD ) instrumentation and Ground Penetrating Radar ( GPR ) equipment.

#### 03 AERIAL SURVEYING

Vision International uses a number of aerial imagery acquisition platforms aprovide mapping at various scales and formats for clients, according to their requirements.Using Unmanned Aerial Vehicles (UAV) based in Kuwait, We are able to respond rapidly to requests for flying of aerial photography. The company can also fit a LiDAR IGI Lite Mapper 5600 to the aircraft for the acquisition of advanced imagery. Vision International has access to the imagery acquired by the major companies operating in this sector, including DigitalGlobe, RapidEye and Astrium.

#### 04 BATHYMETRIC SURVEYING

With the rapid development of the offshore potential of Kuwait, bathymetric and hydrographic surveying is increasingly in demand. Vision International has the resources to respond to this demand, being able to deploy single-beam and multibeam echosounders from a variety of platforms, from inflatable ribs to sea-going vessels, for bathymetric surveys of both inshore and deeper waters. Equipment, including DGPS instrumentation, side scan sonar, sub-bottom profilers, magnetometers, CTD units,and offshore and onshore weather stations.

#### 05 3D LASER SCANNING

Increasingly, there is a requirement for the measurement and depiction of structures inthree dimensions. Vision International possesses the specialist instrumentation, software and skills to perform 3D laser scanning of buildings under construction, storage tanks, bridges and other structures, presenting the results to clients as three dimensional models for the evaluation of the structures.

#### 06 CAD DEPARTMENT

The work of the Field Survey Teams is complemented by the professionalism and dedication of the CAD cartographers and software developers in the Company, who work with the latest releases of survey software.

# COMPANY ACTIVITIES

## 03. GEOTECHNICAL INVESTIGATION

Geotechnical investigation and exploration is the foundation of any construction, as the design in puts require a precise knowledge of the soil conditions. The geotechnical report ensure the construc tion of a durable structure, based on the consultant's choice of the most appropriate foundations.

Vision International has a wide range of means and resources that allow performing any kind of geotechnical investigation. Our drilling rigs allow us to choose the most suitable equipment, in accordance with the type of soil on which we have to work. Our team is capable to investigate the soil and geologic conditions of a property and to provide recommen dations and design criteria for construction.



The geotechnical Department operates a fleet drilling rigs equipped with the latest technology for drilling and sampling. Our drilling rigs are designed to meet ASTM standards for Geotechnical investigation.

### **Our Geotechnical Department offers services including:**

- Bearing capacity analysis
- Foundation analysis
- Settlement analysis
- Slope stability analysis.
- Other related engineering analysis.



**EXPERIENCED  
IN THE EXECUTION OF  
PROJECTS INVOLVING SURVEY  
AND GEOTECHNICAL INVESTIGATION**

# MAJOR CLIENTS



The Company works closely with Clients and Owners both from the Private Sector and the Public Sector in Kuwait. During the past year, Clients and Owners for whom we have performed services include:

- Kuwait Oil Company (KOC).
- Kuwait National Petroleum Company (KNPC).
- Joint Operations, Wafra. (KGOC)
- China National Petroleum Corporation (CNPC)
- Fluor Daniel Consultants B.V. •
- AMEC GROUP.
- US Army Corps of Engineers.
- Kuwait Municipality.
- Ministry of Public Works MPW.
- Ministry of Electricity and Water MEW.
- Public Authority of Roads and Transportation (PART).
- Public Authority of Agriculture Affairs and Fish Resources (PAAF).
- Public Authority for Andustry (PAI).
- Kharafi National KSc. (Closed).
- Al-Essa Medical and Scientific Equipment Company.
- Instruments Installation and Maintenance Company (IMCO).
- Touristic Enterprises Company.
- Ahmadia Contracting and Trading Company.
- F&K Ibrahim Al-Shuwayer & Partners.
- Al-Musairie National General Trading and Contracting Company.
- S.K. Engineering & Construction.
- O & G Engineering Co. W.L.L.
- Parsons Brinckehoff International.
- Gulf Spic.
- Larsen & Toubro Limited (L&T).
- Combined Group Contracting Company (K.S.C.C).
- Gulf Rocks Company.
- ROLTA Middle East.
- Michael Baker Jr. Inc. USA.
- ALMEN.
- HOT Engineering and Construction Co.
- Pan Arab Consulting Engineers (PACE).
- Daelim Industrial Co., Ltd.
- Halcrow group Limited.
- Almeer Technical Services Co. W.L.L.
- Arabian Consulting Engineering Centre Co.





# SAMPLE PROJECTS

## 01. KIPIC - GIS Project



**CLIENT** : Kuwait Integrated Petroleum Industries Company (KIPIC)  
**SECTOR** : Oil & Gas  
**DURATION** : 3 Years

### PROJECT DESCRIPTION:

**development of KIPIC facility management system and supporting KIPIC departments with the required GIS services.**

including spatial analysis , data management , GIS software development , GIS Training and GIS technical support

## 02. Limak - 3D Scanning & Modelling



**CLIENT** : Kuwait international Airport  
**SECTOR** : 3D Scanning & Modelling  
**DURATION** : DONE

### PROJECT DESCRIPTION:

**3D Scanning & Modelling the Kuwait international Airport new passenger terminal II.**

Vison has an agreement with Limak İnşaat Kuwait SPC to carry out the 3D Scanning of completed areas of the Kuwait International Airport New Passenger Terminal II to build as As-Built 3D model to be utilized.



# SAMPLE PROJECTS

## 03. Kuwait Municipality Parcel Handover:

**CLIENT** : Kuwait Municipality  
**SECTOR** : Government, Kuwait  
**DURATION** : DONE

بلدية الكويت  
Kuwait Municipality



### PROJECT DESCRIPTION:

**Vision succeeded to automate the delivery of lands to Kuwaiti citizens for Kuwait Municipality.**

This was done depending on deferent technologies to reach the accuracy of the delivered coordinates of the parcels to less than 2mm and avoid the interaction of the human errors in the operation.

- The significant change was to move from the manual paper process to computer based process using Kuwait municipality VRS, Robotic Total stations, GPS and esri ArcGIS platform as Geographic information system in addition to custom made Geospatial solution to implement the full workflow.





# SAMPLE PROJECTS

## 04. FLEET MANAGEMENT SYSTEM

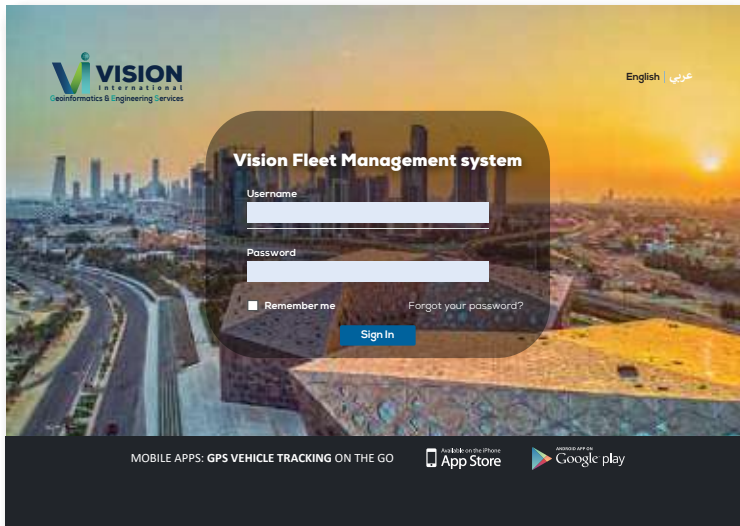
**CLIENT** : fleet tracking softwares

**SECTOR** : GPS

**DURATION** : DONE

### PROJECT DESCRIPTION:

#### GPS Tracking & Fleet Management System



Our GPS Tracking & Fleet Management System has been proven to be one of the most advanced system that help businesses optimize their fleet's performance. Many vehicle managers see a huge difference in cost savings within days of purchasing our fleet tracking system. Gulf Axis adds a whole new element to GPS fleet tracking with specific Green features designed to reduce fuel consumption, Regain control, know where your vehicle is now, where it's been, where it's headed and how fast it is driven.

- The solution is made of hardware and software components that allows to monitor key vehicle activity parameters and provides means to control drivers. All information is accessible on our secure web based platform. Solution is designed for various sized business and can be applied to all types of transport. Solution has user Friendly web-based application used to monitor your Fleet, Drivers and Time at once customized to best suit your Business needs.



# SAMPLE PROJECTS

## 05. KOC Samrt 3D Mode

**CLIENT** : Kuwait Oil Company KOC  
**SECTOR** : Oil & Gas  
**DURATION** : 6 Months

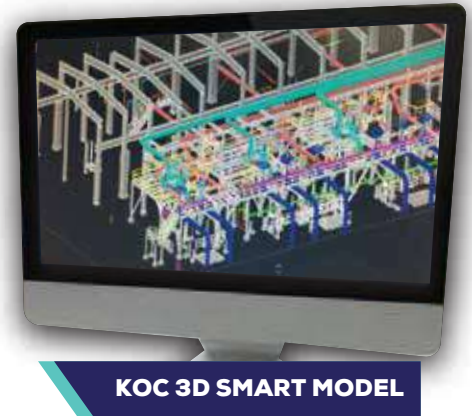


### PROJECT DESCRIPTION:

**Pilot project for a 3D laser scanning and 3D modelling for one of the KOC facility**

this was developed and integrated with the internal asset management system, GIS systems and Electronic work order Platform used Trimble Laser scanner SX10, Trimble Business Center, Trimble Edgewise, AutoDesk Plant 3D and Bentley Open Plant 3D. Scope of work is to design the Assets database for the assets included in the scope taking in consideration the network connectivity.

- Plan the integration with the working database based on the systems.



This is beside the project management systems used to monitor the implementation of the projects of the group (specially the costing and scheduling modules) to guarantee the fulfillment of the 4<sup>th</sup>D and 5<sup>th</sup>D of implementation. In addition, any available real time system to confirm the 6D for asset management and monitoring.



- preparation of detailed dataflow and workflow diagrams needed for integration.
- Determination of the temporal monitoring database elements and their relation with the point cloud.
- prepare the integration libraries and services as determined in the first stage.
- Test the integration and outputs from other systems.
- Prepare and evaluation report for the whole pilot.

## 06. 3D Scanning and Processing

**CLIENT** : China Petroleum Engineering & Construction  
**SECTOR** : Oil & Gas  
**DURATION** : 2 Months



### PROJECT DESCRIPTION:

**3D Laser scanning for 3 of the KOC facilities for disposal water treatment WARA PROJECT in Kuwait Oil Company.**

Project deliverable was in Point Cloud format processed using Aveva LFM server the project scope is to deliver high density point

- cloud with bubbleview in AVEVA E3D format Technology implemented Trimble SX10 Laser Scanner, Trimble TX8 Laser scanner, Trimble Business Center and LFM server



# SAMPLE PROJECTS

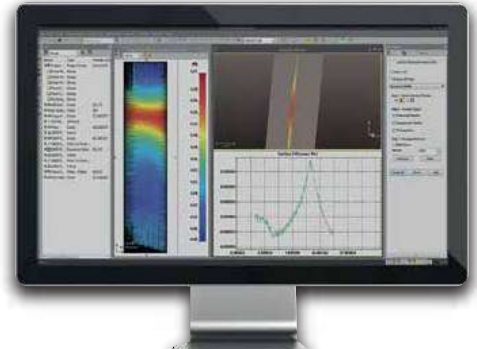
## 07. KNPC Laser Scanning and Verticality Measurement

**CLIENT** : KNPC  
**SECTOR** : Oil & Gas  
**DURATION** : 2Months

### PROJECT DESCRIPTION:

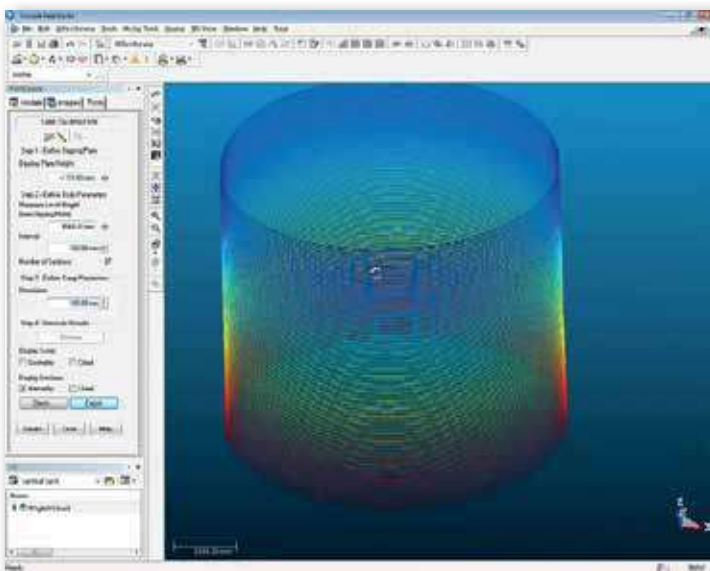
**the project was developed to capture the point cloud for one of the under construction facilities for KNPC.**

The purpose is to develop a 3D scanning and perform verticality calculation for steel Structure



KNPC 3D LASER SCANNING

## 08. KNPC - 3D Laser scanning for Tanks Calibration



**CLIENT** : KNPC  
**SECTOR** : Oil & Gas  
**DURATION** : 1 Months

### PROJECT DESCRIPTION:

**3D laser scanners to capture very accurate, factual information i.**

Captured data was then analyzed in the office to provide:

- Simple coordinates of objects
- Length measurements and diameters
- Angular or tilt information
- Shape information, such as roundness of objects
- Area/volume measurements
- Deformation, or change, in objects over time

## 09. Mobile 3D Scanning and Processing - Wafra project

### PROJECT DESCRIPTION:

**Using TRIMBLE MX2 MOBILE MAPPING**

which is a vehicle-mounted spatial imaging system which combines high resolution laser scanning and precise positioning to collect geo-referenced point clouds for the roads in wafra in addition to the surroundings that includes terrain, power line transmission towers, conductors, and other possible artifacts.



MOBILE SCANNING



# MAJOR PROJECTS

## Survey Projects

- Project** : Topographic Survey & Underground Services for Survey and Engineering Drafting Services.
- Client** : Mezyad G Al-Ghanim Contracting Establishment.
- Owner** : Joint Operations, Wafra.



Static Network

- Project** : Survey and Establishment of VRS Network within the State of Kuwait.
- Client** : Kuwait Municipality.
- Owner** : Kuwait Municipality.

- Project** : Calibration and Verticality Survey of Storage Tanks.
- Client** : Kuwait National Petroleum Company.
- Contact** : Eng. Haider Husain Abdulla Atash.
- Owner** : Kuwait National Petroleum Company, Shuaiba Refinery.

- Project** : In line inspection Services for underground pipeline and Establishment of above ground markers.
- Client** : T D Williamson Middle East.
- Contact** : Mr. Solomon Koshy.
- Owner** : Kuwait Oil Company.

- Project** : Topographic Survey and Volumetric Survey for Remediation of Contaminated Soil in South and East Kuwait.
- Client** : GS Engineering & Construction Corporation.
- Owner** : Kuwait Oil Company.



Asset Survey

- Project** : Topographic Survey, Underground Services, Slit Trenching and Geotechnical Investigation for New Local Marketing Depot at Al Matla MAA / SHU Refinery and Matla Depot.
- Client** : AMEC.
- Owner** : Kuwait National Petroleum Company.

# MAJOR PROJECTS

## Survey Projects



- Project** : **Topographic Survey, Underground Services, Slit Trenching and Geotechnical Investigation for Replacement of 14, No' s old Substation, MAA Refinery.**
- Client** : **AMEC.**
- Owner** : **Kuwait National Petroleum Company.**



**Topographic Survey**



# MAJOR PROJECTS

## Survey Projects

**Project** : Topographic Survey, Underground Services and Slit Trenching for Front End Engineering Design ( FEED) for 5th Gas Train Project, MAA Refinery.  
**Client** : AMEC.  
**Owner** : Kuwait National Petroleum Company.

---

**Project** : Topographic Survey and Field Verification for Preparation of a Consolidated Zoning Code and Zoning Regulations and Urban Planning.  
**Client** : SSH.  
**Owner** : Kuwait Municipality.



Underground Utility Survey

---

**Project** : Topographic Survey & Underground Survey Slit Trenching Services Offshore Geotechnical Investigation Onshore Geotechnical Investigation Bathymetric and Met-Ocean Survey For Revamp of Sulphur Handling Facilities Project, MAA Refinery, KNPC Al-Ahamdi.  
**Client** : Daelim Industrial Co. Ltd.  
**Owner** : Kuwait National Petroleum Company.

---

**Project** : Topographic Survey & Underground Survey Slit Trenching Services Fluid Catalytic Cracker ( F CC ) Project, MAA Refinery, KNPC Al- Ahamdi.  
**Client** : Daelim Industrial Co. Ltd.  
**Owner** : Foster Wheeler, KNPC.

---

**Project** : Enigneering Survey Services - Symphony Hotel Complex.  
**Client** : Emirates Dutch Star Engineering L.L.C.

# MAJOR PROJECTS

## Survey Projects

**Project** : Kuwaity commander base at Jahra.  
**Client** : Hally Trading & Contracting Corp.

---

**Project** : Ministry of Electricity and Water Cable Laying and Civil Works for 132kV XLPE Cables Route Survey Works and As-Built Drawings ESTABLISHMENT OF SURVEY CONTROL NETWORK AND TOPOGRAPHIC SURVEY: PHASE 1.  
**Client** : Consolidated Contractors Company (Kuwait) WLL.

---

**Project** : Engineering Survey Services - Alignment Survey Inside KNPC Mina Abdullah Refinery.  
**Client** : Kuwait National Petroleum Company (KNPC) & O&G Engineering.

---

**Project** : Laser Scan Survey-Manpower.  
**Client** : BCL - Dubai.



# MAJOR PROJECTS

## Geotechnical Investigation

- Project** : Geotechnical Investigation Services on the sites of Package 2 and Package 3 of the New Refinery Project at Al-Zour in Kuwait, prior to the construction of storage tanks in the two areas.
- Client** : WINTECO Corporation.
- Owner** : Kuwait National Petroleum Company.



- Project** : Geotechnical Investigation Services at Zone-1 of the Site for Construction of Low cost houses at Salmi.
- Client** : WINTECO Corporation.
- Owner** : Public Authority for Housing Welfare (PAHW).

- Project** : Geotechnical Investigation and Excavation of Slit Trenches as Consultancy Services for the supply of Gas Oil from the Shuaiba Tank Farm in Mina Abdulla Refinery (MAB) to the Ministry of Electricity and Water pipelines and pumping facilities for the Refineries at Mina Al-Ahmadi Refinery (MAA).

- Client** : Amec Foster Wheeler K.
- Owner** : Kuwait National Petroleum Company (KNPC) & O&G Engineering.



- Project** : Geotechnical Investigation Services on the site of Upgrading of Existing Export Facilities at North Tank Farm (NTF) and South Tank Farm (STF) at KOC area, Kuwait, prior to the construction of upgradation works in the two areas.
- Client** : Arabi Enertech.
- Owner** : Kuwait National Petroleum Company (KNPC) & O&G Engineering.

